

FURUTECH

PURE TRANSMISSION

AEx

オーディオ銘機賞
Audio Excellence Award 2008



New 2009! High Performance Duplex SCHUKO Wall Sockets



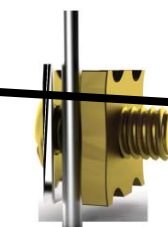
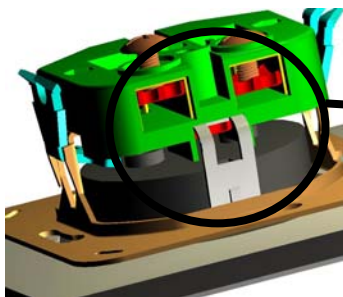
FP-SWS-D (G)

FP-SWS-D (R)

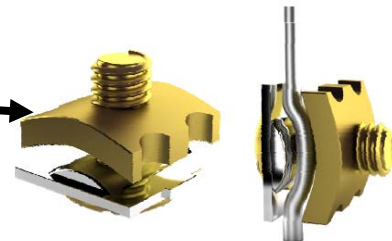
Type: 2-pole+earth

Rating: 16A 250V A.C.

- α (Alpha) Pure copper main Conductor (t : 0.5mm)
- Material: Nylon/fiberglass body and Poly carbonate cover; Bracket with a 1.0mm thick Zinc/steel brace plate and spray finished ABS front plate
- Specified for wire diameters of 2.8mm or 5.5 Sq.mm/10AWG Max. (set screw)
- Dimensions: 152.0mm (L) x 81.0mm (W) x 48.0mm(H)
- Furutech's total attention to detail and build quality extends right down to a specially designed patent-pending pressure plate (see below) that increases the contact area of the Alpha Conductors.



Regular Clamp



Furutech Patent Pending Clamp

Contact Area Calculated Increase: 17.142%

All metallic parts are treated with the

*FURUTECH α (Alpha) Process (Super Cryogenic & Demagnetizing Treatment.)

FURUTECH CO.,LTD

service@furutech.com

Make A More Powerful Connection with Furutech!