

# FURUTECH

PURE TRANSMISSION

# AEx

オーディオ銘機賞  
Audio Excellence Award 2008



## High Performance IEC Inlets



AC Inlet (R) Rhodium Plated

AC Inlet (G) 24k Gold Plated

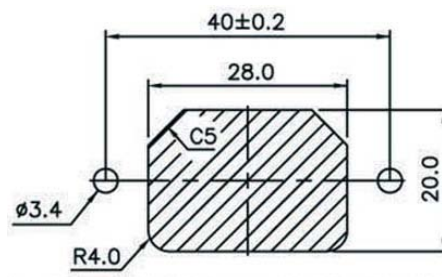
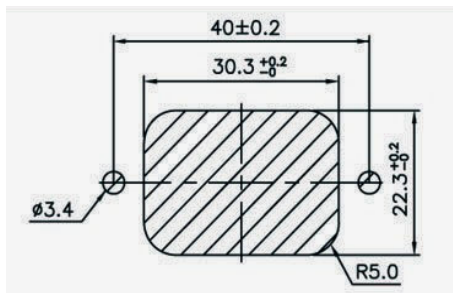
Type: 2-pole+earth 15A 125V/10A 250V A.C.

- $\alpha$  (Alpha) Eutectic (low temperature) cast copper alloy conductor
- PBT and fiberglass housing
- Connections: Soldered
- Dimensions: 49.45mm (W) x 22.0mm (D) x 27.1 mm (H) approx.
- Rated: 15A/125V ,10A/250V

### Panel Cut out Size

FOR REAR MOUNTING USE

FOR FRONT MOUNTING USE



All metallic parts are treated by

\*FURUTECH  $\alpha$  (Alpha) Process (Super Cryogenic & Demagnetize Treatment .)

FURUTECH CO., LTD.  
service@furutech.com

**Make A More Powerful Connection With Furutech!**